



NAMIBIA WILDLIFE RESORTS

RACK RATES

01 November 2008 – 31 October 2009

All bookings to be pre-arranged through the Central Reservation Office:
Private Bag 13267, Windhoek, NAMIBIA
Erkrath Building, 189 Independence Avenue

Tel: +264 61 285 7200 Fax: +264 61 224 900

Email: reservations@nwr.com.na ct.bookings@nwr.com.na swakopmund@nwr.com.na

For enquiries, please contact:

Lahia Homateni Tel: +264 61 2857200 (information@nwr.com.na)

Anna Nashandi Tel: +264 61 2857200 (information@nwr.com.na)

All prices are quoted in Namibian Dollars (N\$) which are equivalent to the South African Rand

GENERAL PRINCIPLES

- Rack rates include 15% VAT and Tourism levies.
- Rack rates are subject to change without prior notice and are subject to NWR's terms and conditions.
- Children under the age of 6 stay free of charge.
- Children 6-12 years old pay 50%.
- Provision for children will be made upon arrival; however the booking must be made in advance.
- No more than two children may share a room with their parents.
- Disabled access units are available at a number of our facilities – please enquire and specify when booking
- In order to promote tourism in the country, Namibians and Namibian permanent residents qualify for a 25% discount on accommodation rack rates; Namibian pensioners qualify for a 35% discount on accommodation rack rates.
- Tour operators, both in Namibia and abroad, qualify for commission at the discretion of NWR.
- Activities and meals are non commissionable.
- These rates are approved by Resolution number 2008.03.31/02 of the Board of Directors of Namibia Wildlife Resorts.

www.nwr.com.na

		November 2008 – April 2009				May 2009 - October 2009			
		Accommodation		Camping		Accommodation		Camping	
Unit description	Qualifier	Per person sharing	Single rate	Per site	Per person	Per person sharing	Single rate	Per site	Per person

Hobas

Camp site (max 8 people)				100	100			100	100
--------------------------	--	--	--	-----	-----	--	--	-----	-----

Naukluft

Camp site (max 8 people)				100	50			100	50
--------------------------	--	--	--	-----	----	--	--	-----	----

Duwisib

Camp site (max 8 people)				100	50			100	50
Castle entrance	Namibians: N\$ 30.00 SADC: N\$ 50.00 Others: N\$ 60.00								

Daan Viljoen

Camp site (max 8 people)				100	50			100	50
Bush chalet (2 beds)	pps - B&B Tourism levy incl.	250	350			250	350		
Family chalet (4 beds - self catering)	pps - B&B Tourism levy incl.	350	600			350	600		

Khorixas

Camp site (max 8 people)				100	50			100	50
Single room (1 bed)	pps - B&B Tourism levy incl.		300				400		
Bush chalet (2 beds)	pps - B&B Tourism levy incl.	300	450			350	500		
Family chalet (4 beds)	pps - B&B Tourism levy incl.	400	800			450	800		

Popa Falls

Camp site (max 8 people)				100	50			100	50
River cabin (4 beds)	pps - B&B Tourism levy incl.	250	350			250	350		

		November 2008 – April 2009				May 2009 - October 2009			
		Accommodation		Camping		Accommodation		Camping	
Unit description	Qualifier	Per person sharing	Single rate	Per site	Per person	Per person sharing	Single rate	Per site	Per person

Gross Barmen

Camp site (max 8 people)				50	50			50	50
Bush chalet (2 beds)	pps - B&B Tourism levy incl.	300	450			300	450		
Bush chalet (4 beds)	pps - B&B Tourism levy incl.	350	600			350	600		
Family chalet (4 beds)	pps - B&B Tourism levy incl.	400	800			400	800		

Hardap

Camp site (max 8 people)				50	50			50	50
Bush chalet (2 beds)	pps - B&B Tourism levy incl.	300	450			300	450		
Bush chalet (4 beds)	pps - B&B Tourism levy incl.	400	600			400	600		
Family chalet (4 beds)	pps - B&B Tourism levy incl.	450	800			450	800		

Terrace Bay

Double room (2 beds)	pps - B&B Tourism levy incl.	700	950			650	800		
Beach chalet (8 beds)	pps - B&B Tourism levy incl.	800	3200			800	3200		

Torra Bay

Camp site (max 8 people)				100	50			100	50
--------------------------	--	--	--	-----	----	--	--	-----	----

		November 2008 – April 2009				May 2009 - October 2009			
		Accommodation		Camping		Accommodation		Camping	
Unit description	Qualifier	Per person sharing	Single rate	Per site	Per person	Per person sharing	Single rate	Per site	Per person

Waterberg

Camp site (max 8 people)				100	100			100	100
Double room	pps - B&B Tourism levy incl.	500	650			500	650		
Bush chalet (2 beds)	pps - B&B Tourism levy incl.	650	800			650	800		
Bush chalet (4 beds)	pps - B&B Tourism levy incl.	650	900			650	1000		
Family chalet (4 beds)	pps - B&B Tourism levy incl.	750	1300			900	1500		
Premier bush chalet (2 beds)	pps - B&B Tourism levy incl.	800	1200			1000	1400		
Guided morning drives		450 per person				Children 6-12 half price, no children under the age of 6 permitted			
Guided afternoon drives		450 per person							
<i>To be booked on site</i>									

Ai-Ais

Camp site (max 8 people)				100	100			100	100
Double room (2 beds)	pps - B&B Tourism levy incl.	650	1000			650	1000		
Bush family chalet (4 beds)	pps - B&B Tourism levy incl.	800	1600			800	1600		
Guided excursion		800 per person (full day) 400 per person (morning or afternoon)				Children 6-12 half price, no children under the age of 6 permitted			
<i>To be booked on site</i>									

		November 2008 – April 2009				May 2009 - October 2009			
		Accommodation		Camping		Accommodation		Camping	
Unit description	Qualifier	Per person sharing	Single rate	Per site	Per person	Per person sharing	Single rate	Per site	Per person

Halali									
Camp site (max 8 people)				200	100			200	100
Double room	pps B&B Tourism levy incl.	650	800			650	800		
Bush chalet (4 beds)	pps B&B Tourism levy incl.	750	1000			800	1200		
Bush chalet (2 beds)	pps B&B Tourism levy incl.	750	900			850	1000		
Bush chalet (2 beds - disabled access)	pps B&B Tourism levy incl.	750	900			850	1000		
Family chalet (4 beds)	pps B&B Tourism levy incl.	800	1500			950	1800		
Honeymoon suite (double bed)	pps B&B Tourism levy incl.	1000	1500			1200	1600		
<p><i>Children under the age of 6 stay free of charge, 6-12 years old pay 50%. Provision for children will be made upon arrival; however the booking must be made in advance.</i></p> <p><i>Disabled access units available – please specify when booking</i></p>									
Guided morning drives	450 per person					Children 6-12 half price, no children under the age of 6 permitted			
Guided afternoon drives	450 per person								
Guided night drives	550 per person								
<i>To be booked on site</i>									

		November 2008 – April 2009				May 2009 - October 2009			
		Accommodation		Camping		Accommodation		Camping	
Unit description	Qualifier	Per person sharing	Single rate	Per site	Per person	Per person sharing	Single rate	Per site	Per person

Okaukuejo

Camp site (max 8 people)				200	100			200	100
Double room (2 beds)	pps B&B Tourism levy incl.	650	800			650	800		
Bush chalet (2 beds)	pps B&B Tourism levy incl.	750	900			900	1000		
Family chalet (4 beds)	pps B&B Tourism levy incl.	800	1400			950	1800		
Waterhole chalet double rooms (2 beds)	pps B&B Tourism levy incl.	750	1000			1000	1500		
Premier Waterhole Chalet (double story, 4 beds)	pps DB&B Tourism levy incl.	1600	3000			2000	3500		
<i>Children under the age of 6 stay free of charge, 6-12 years old pay 50%. Provision for children will be made upon arrival; however the booking must be made in advance. Disabled access units available – please specify when booking</i>									
Guided morning drives		500 per person				Children 6-12 half price, no children under the age of 6 permitted			
Guided afternoon drives		500 per person							
Guided night drives		600 per person							
<i>To be booked on site</i>									

Namutoni

Camp site (max 8 people)				200	100			200	100
Double room (2 beds)	pps – LDB&B Tourism levy incl.	1200	1700			1500	1900		
Bush Chalet (2 beds)	pps – LDB&B Tourism levy incl.	1500	2000			1800	2200		
Guided morning drives		500 per person				Children 6-12 half price, no children under the age of 6 permitted			
Guided afternoon drives		500 per person							
Guided night drives		600 per person							
<i>To be booked on site</i>									

		November 2008 – April 2009				May 2009 - October 2009			
		Accommodation		Camping		Accommodation		Camping	
Unit description	Qualifier	Per person sharing	Single rate	Per site	Per person	Per person sharing	Single rate	Per site	Per person

Sesriem

Camp site (max 8 people)				300	150			300	150
--------------------------	--	--	--	-----	-----	--	--	-----	-----

Shark Island

Lighthouse (4 beds)		450	700			450	700		
Island Chalet (4 beds)		300	400			300	400		
Camp site (max 8 people)				50	50			50	50

Children under the age of 6 stay free of charge, 6-12 years old pay 50%. Provision for children will be made upon arrival; however the booking must be made in advance.

Sossus Dune Lodge

Dune chalet (2 beds)	pps - LDB&B Park entrance fees Tourism levy incl.	1800	2300			2200	2400		
Honeymoon chalets (double bed)	pps - LDB&B Park entrance fees Tourism levy incl.	2500	3000			2800	3200		

Guided excursions to Sossusvlei	500 per person	Children 6-12 half price.
Guided nature drives in Namib-Naukluft Park	500 per person	
Guided excursion to Elim Dune	500 per person	
Guided walks to Sesriem Canyon	250 per person	

To be booked on site

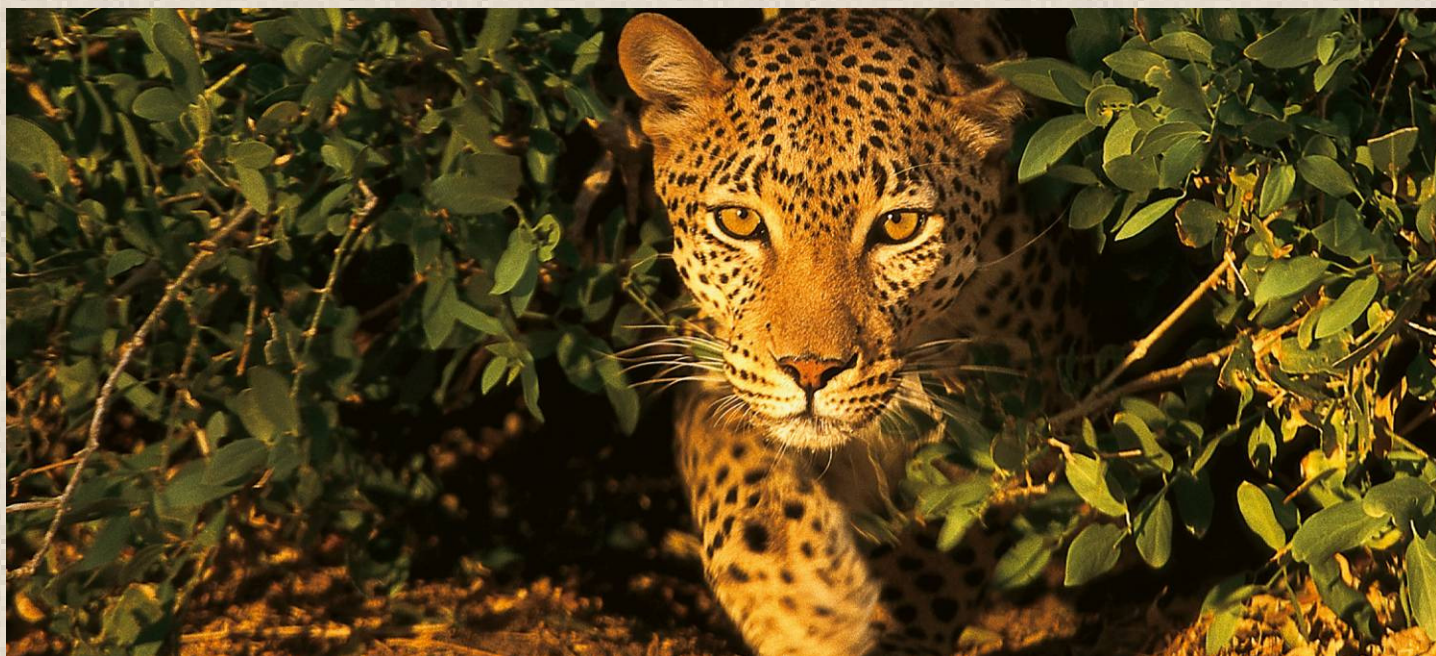
Onkoshi Camp (Etosha National Park)

Onkoshi chalet (2 beds)	pps - LDB&B Park	4,500	5,500			4,500	5,500		
Onkoshi honeymoon chalets (king-sizedbed)	entrance fees Tourism levy incl. and all activities	4,995	5,995			4,995	5,995		

Children from 6-12 years old pay 50% while those younger than 6 years stay for free

Reservations for Onkoshi Camp can be made through onkoshireservations@nwr.com.na

Namibia



NWR
namibia wildlife resorts

NWR – Conserving Namibia's Natural Heritage

All bookings to be pre-arranged through the Central Reservation Office:
Private Bag 13267, Windhoek, NAMIBIA
Erkrath Building, 189 Independence Avenue

Tel: +264 61 285 7200 Fax: +264 61 224 900

Email: reservations@nwr.com.na ct.bookings@nwr.com.na swakopmund@nwr.com.na

For enquiries, please contact:

Lahia Homateni Tel: +264 61 2857200 (information@nwr.com.na)

Anna Nashandi Tel: +264 61 2857200 (information@nwr.com.na)

www.nwr.com.na